

Digital Photo Printer SP-300 Series

Printer Driver Version 1

Instruction Manual

Contents

Using your printer with Windows computers-----	1
System requirements -----	1
Notes-----	2
Installing the printer driver for Windows 2000/XP -----	3
Uninstalling the printer driver for Windows 2000/XP-----	6
Installing the printer driver for Windows Vista -----	7
Uninstalling the printer driver for Windows Vista-----	10
Printing from application software -----	13
To cancel printing -----	17

SHINKO ELECTRIC CO., LTD. SOFTWARE LICENSE AGREEMENT

IMPORTANT

READ THIS AGREEMENT CAREFULLY BEFORE USING THE SOFTWARE ON THE CD-ROM SUPPLIED WITH THE PRINTER.

BY USING THIS SOFTWARE, YOU AGREE TO BE BOUND BY THE TERMS OF THIS AGREEMENT.

IF YOU DO NOT AGREE TO THE TERMS AND CONDITIONS OF THIS AGREEMENT, DO NOT USE THE SOFTWARE INCLUDING THE DOCUMENTS ON THE CD-ROM PROVIDED, AND PROMPTLY RETURN THE WHOLE PRODUCT TO YOUR DEALER.

1. LICENSE

SHINKO ELECTRIC CO., LTD. ("SHINKO") grants you the non-exclusive right to use one copy of the SOFTWARE under the terms and conditions of this Agreement.

2. RESTRICTIONS ON USE

You may use the SOFTWARE on a single computer. You may not modify, reverse engineer, decompile, or disassemble the SOFTWARE.

3. DISCLAIMER OF WARRANTY

This SOFTWARE is provided to you "AS IS" and without any warranty and liability of any kind.

SHINKO, its licensors or suppliers do not warrant that the functions contained in the SOFTWARE will meet your requirements or that the operation of the SOFTWARE will be uninterrupted or error free.

4. LIMITATION OF LIABILITY

In no event will SHINKO, its licensors or suppliers be liable to you for any consequential, indirect, incidental, punitive or special damages, including any lost profits or lost savings, or other damages arising from the use or inability to use the SOFTWARE even if advised of the possibility of such damages.

Some States or jurisdictions do not allow the exclusion or limitation of incidental or consequential damages, so the above limitations may not apply to you.

5. TERM; TERMINATION

This license is effective until terminated. You may terminate this license at any time by destroying the SOFTWARE and all copies in any form. This license will terminate without notice to you if you fail to comply with any term or condition of this license. Upon termination you must destroy the SOFTWARE and all copies in any form.

6. EXPORT RESTRICTIONS

You agree to comply fully with all international and national laws and regulations that apply to the SOFTWARE, and your use thereof, including, but not limited to, end-user, end-use and destination restrictions issued by Japanese and other governments. Without limiting the generality of the foregoing, you agree not to export, directly or indirectly, re-export, divert, or transfer the SOFTWARE or any direct product thereof to any destination, company or person restricted or prohibited by national and international laws or regulations or laws or regulations of any other applicable jurisdiction.

Using your printer with Windows computers

The supplied SP-300 series printer driver enables you to print an image stored on your computer with Digital Photo Printer SP-300 series. To print an image from the computer, you need an application software which can open the image and print with the printer driver.

System requirements

To use the supplied printer driver, you need a computer that meets the following system requirements:

- OS : Windows 2000 Professional /
Windows XP Home Edition / Windows XP Professional (32 bit)/
Windows Vista (32bit)
- CPU : Pentium 150 MHz or better (Windows 2000 Professional)
Pentium 300 MHz or better (Windows XP Home Edition / Windows XP Professional)
x86 processor 1 GHz or better (Windows Vista)

- RAM : 64 MB or more (Windows 2000 Professional)
128 MB or more (Windows XP Home Edition / Windows XP Professional)
512 MB or more (Windows Vista Home Basic)
1 GB or more (Windows Vista Home Premium / Business / Ultimate)

- Hard disk free space : 650 MB or more (Windows 2000 Professional)
1.5 GB or more (Windows XP Home Edition / Windows XP Professional)
15 GB or more (Windows Vista)
(It differs depending on the number of copies to be printed.)

- Port : A built-in USB port on the personal computer.

- CD-ROM drive : For software installation.

Notes

- (1) Be sure to connect the printer directly to your computer. Connecting it via a USB hub may cause the printer to not operate properly.
- (2) Do not use the printer together with other USB devices except a USB keyboard or mouse.
- (3) Do not connect two or more Digital Photo Printer SP-300 series at the same time.
- (4) Do not unplug the USB cable during data transferring or printing. To do so may cause the printer to not operate properly.
- (5) The printer driver cannot be used for network printer.
- (6) Microsoft and Windows are either registered trademarks or trademarks of Microsoft Corporation.
- (7) Other names and products not mentioned above may be registered trademarks or trademarks of their respective companies.

Installing the printer driver for Windows 2000/XP

NOTES

- The explanations in this section are based on Windows XP. On another version of Windows, the actual screen contents and procedures may vary from those shown in this document.

1. Make sure that the printer is turned off and not connected to the computer.
2. Turn on the computer to start the Windows.
 - When installing the driver in Windows 2000 Professional, log on Windows as "Administrator".
 - When installing the driver in Windows XP, log on Windows as a user with the "Computer administrator" user account.
 - Be sure to turn off any virus protection programs and to close other running programs before installing the driver.
3. Insert the supplied CD-ROM labeled "SP-300 series" into the CD-ROM drive.
4. Turn the printer on.
5. Connect the printer to your computer, using the USB cable.

When connection is established, the following window appears automatically on a computer screen.

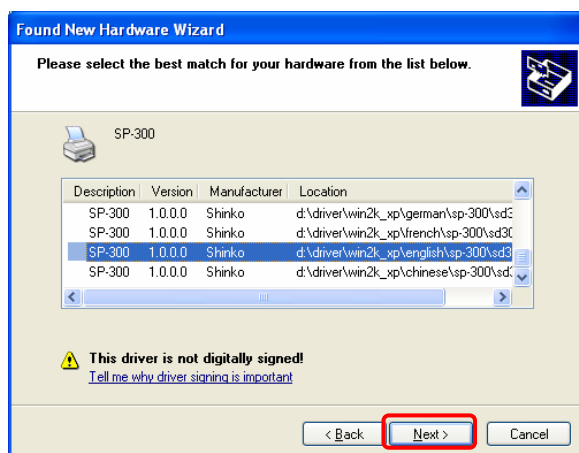




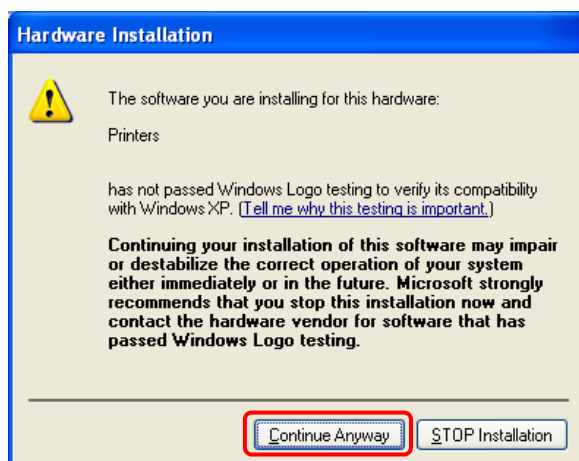
6. Click "Next".



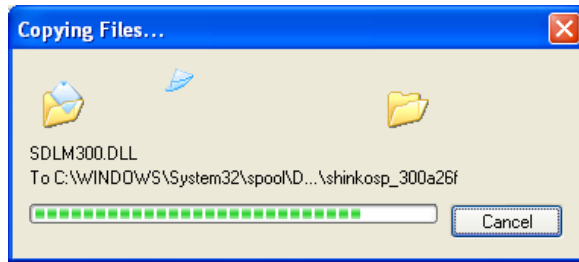
7. Please wait while the wizard searches...



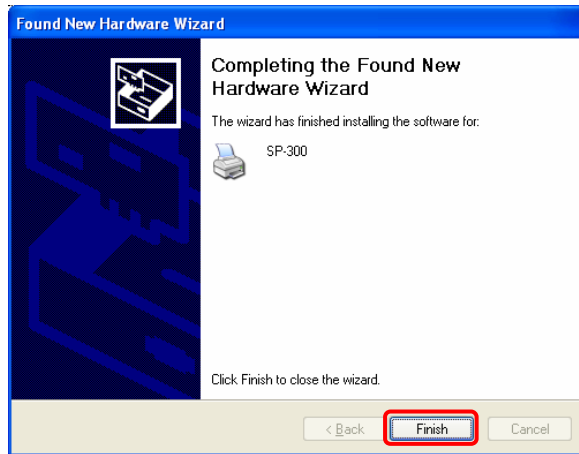
8. Chose a language and Operation System to use, and then click "Next".



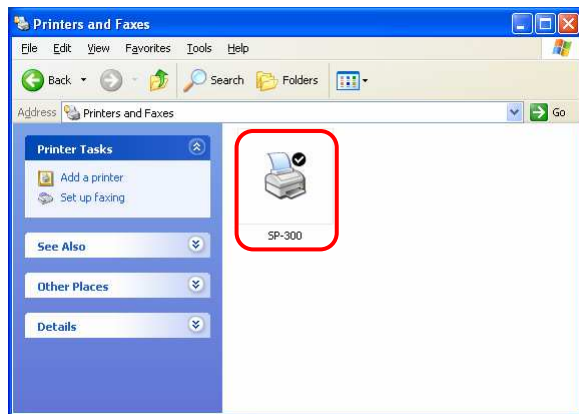
9. Click "Continue Anyway".



10. Copying Files...



11. Click "Finish".



12. The "SP-300" printer icon appears in the "Printers and Faxes" window.

Uninstalling the printer driver for Windows 2000/XP

To uninstall the printer driver, follow the procedures below.

1. Unplug the USB cable from your computer.
2. Select "Settings" from the Windows Start menu, and then click "Printers and Faxes". For Windows 2000, click "Printers".
3. Right-click on the "SP-300" printer icon, and select "Delete" from the pop-up menu.
4. Click "Yes" for "Are you sure you want to delete the printer ' SP-300'?" in the dialog box.
The relevant files in the system will be deleted.
5. Click "Server Properties" in the "File" menu.
6. Select the "Drivers" tab, select "SP-300", and then click "Remove".
7. Follow the on-screen instructions when a confirmation message appears.

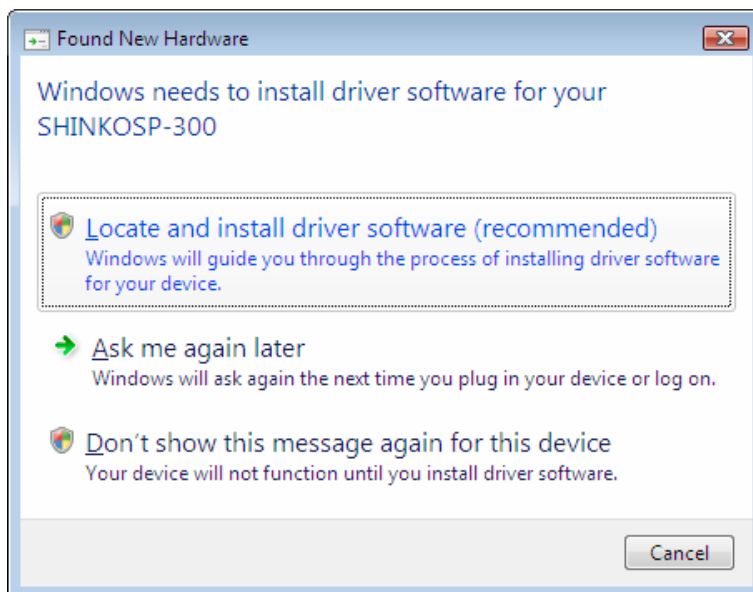
Installing the printer driver for Windows Vista

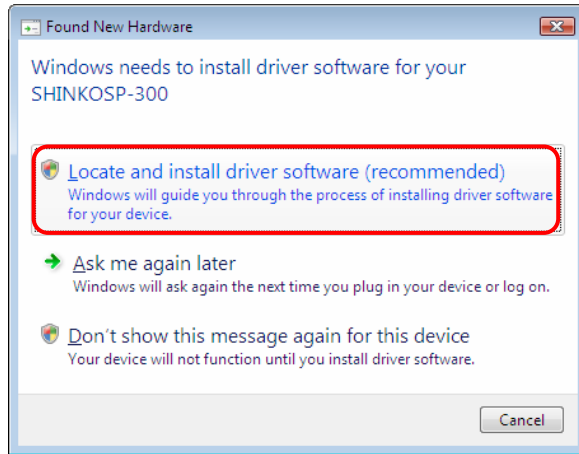
NOTES

- The explanations in this section are based on Windows Vista Business. On another edition of Windows Vista, the actual screen contents and procedures may vary from those shown.

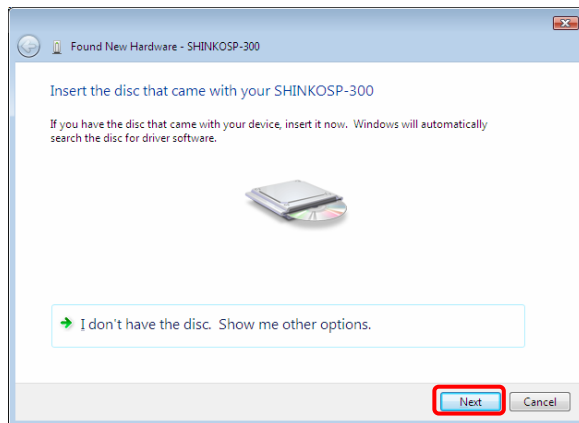
1. Make sure that the printer is turned off and not connected to the computer.
2. Turn on the computer to start the Windows.
 - Be sure to log on Windows as "Administrator".
 - Be sure to turn off any virus protection programs and to close other running programs before installing the driver.
3. Insert the supplied CD-ROM labeled "SP-300 series" into the CD-ROM drive.
4. Turn the printer on.
5. Connect the printer to your computer, using the USB cable.

When connection is established, the following window appears automatically on a computer screen.

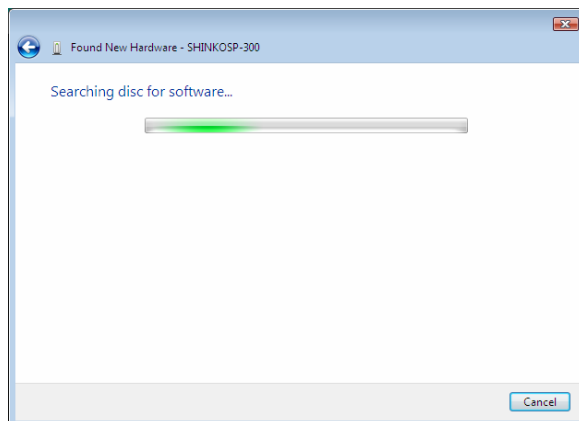




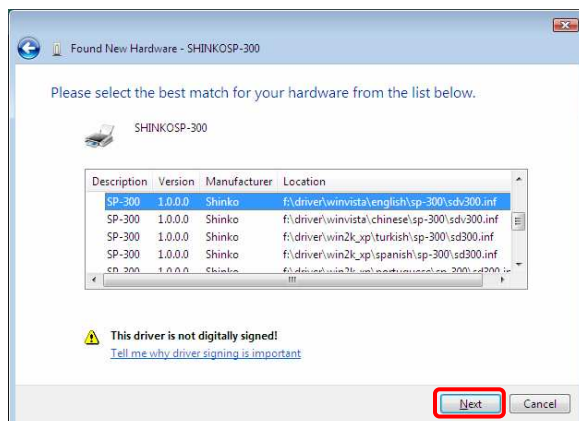
6. Click "Locate and install driver software (recommended)".



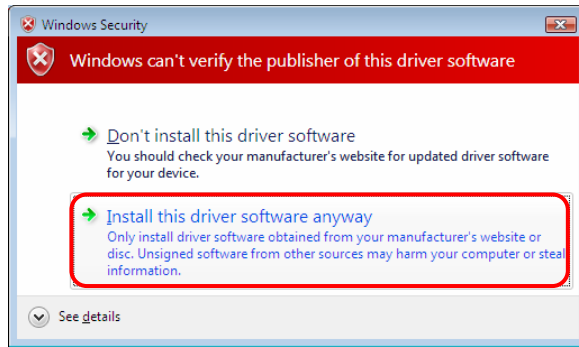
7. Click "Next".



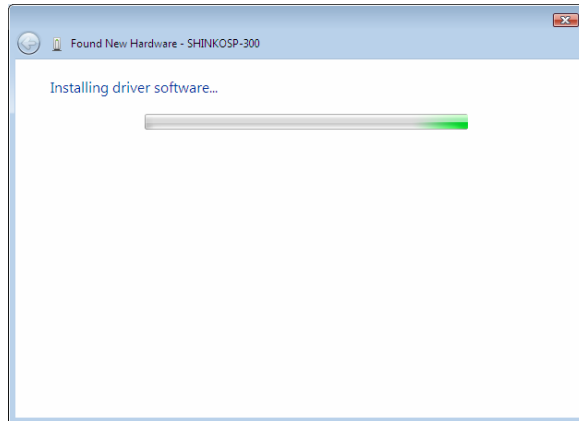
8. Searching disc for software...



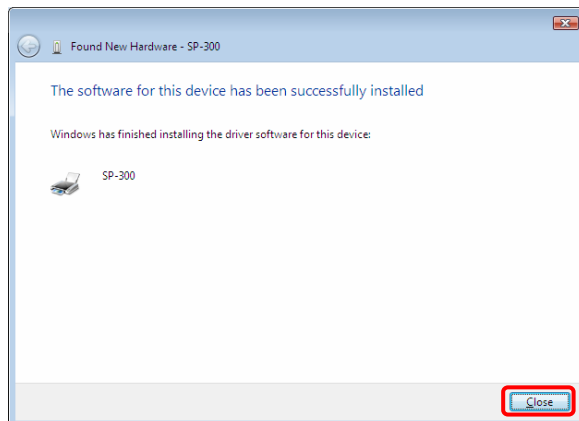
9. Chose a language and Operation System to use, and then click "Next".



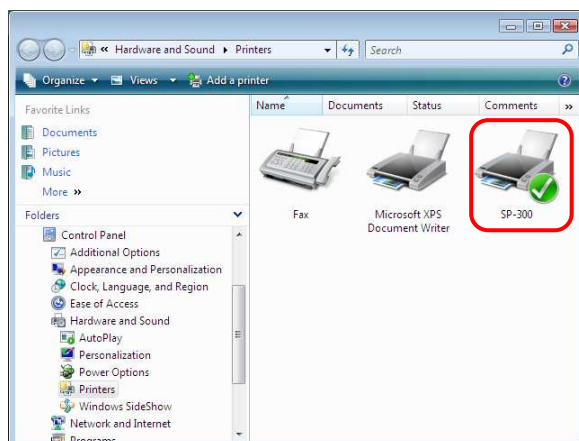
10. Click "Install this driver software anyway".



11. Installing driver software...



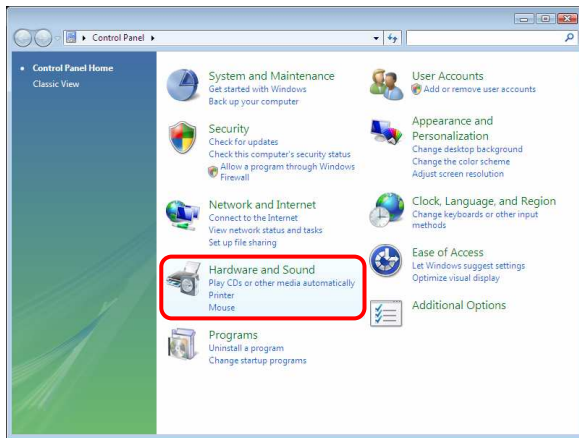
12. Click "Close".



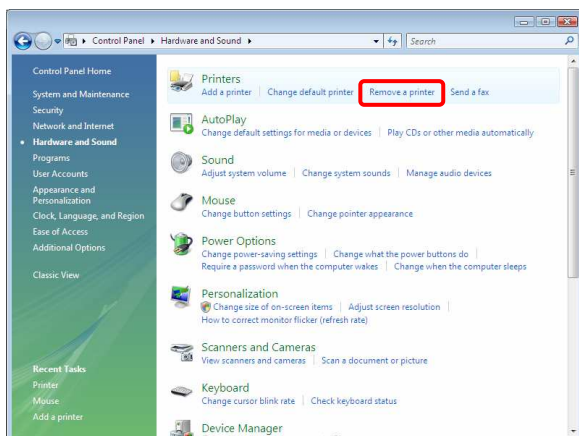
13. The "SP-300" printer icon appears in the "Printers" window.

Uninstalling the printer driver for Windows Vista

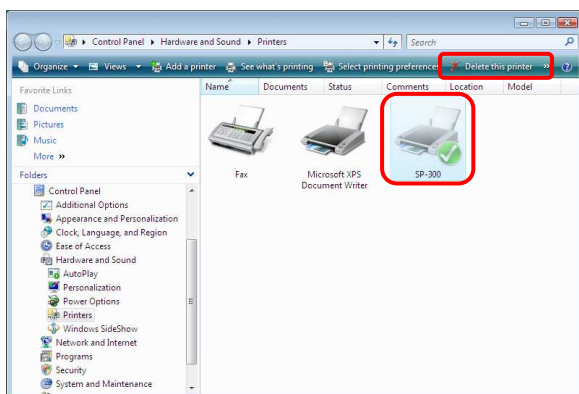
To uninstall the printer driver, follow the procedures below.



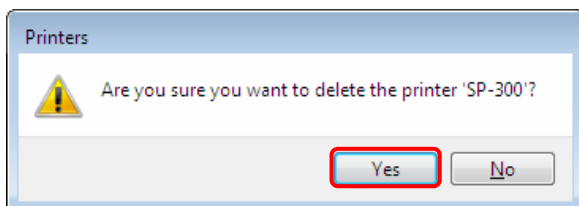
1. Unplug the USB cable from your computer.
2. Open the Control Panel window from Windows Start menu, and then click "Hardware and Sound".



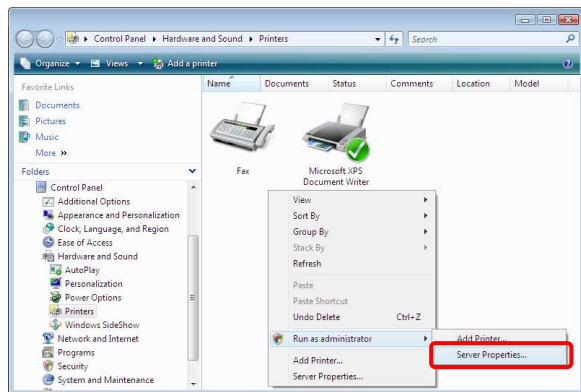
3. Click "Remove a printer" from the "Printers".



4. Select "SP-300" icon, and then Click "Delete this printer".

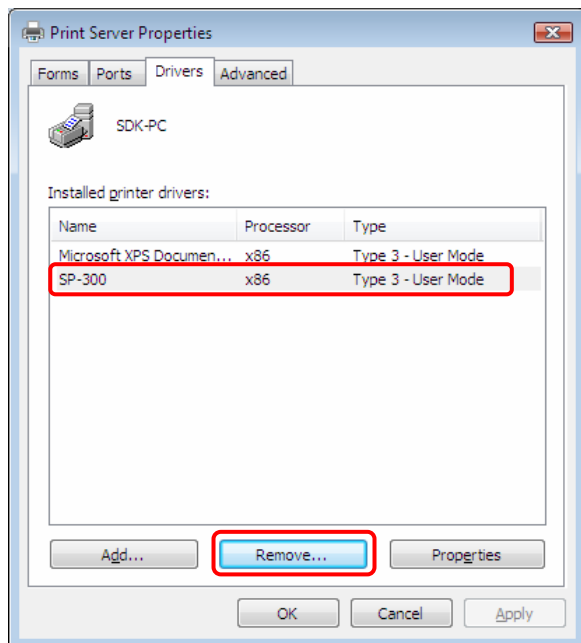


5. Click "Yes".

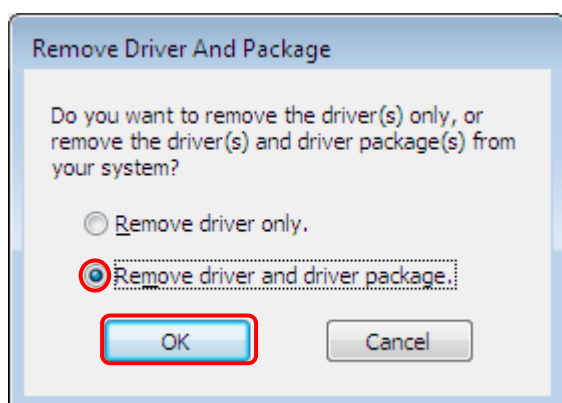


6. Right-click on the "Printers" window, and select "Run as administrator", and then click "Server Properties..."

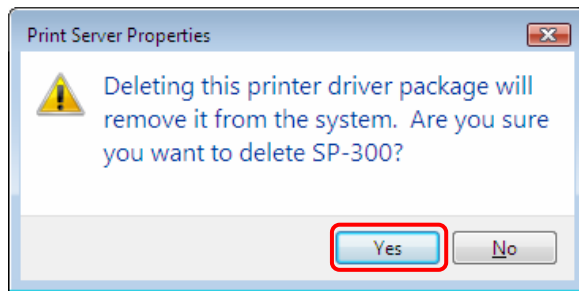
Note: User Account Control message may appear stating that the Windows needs your permission to continue. Click "Continue" to allow the driver to install.



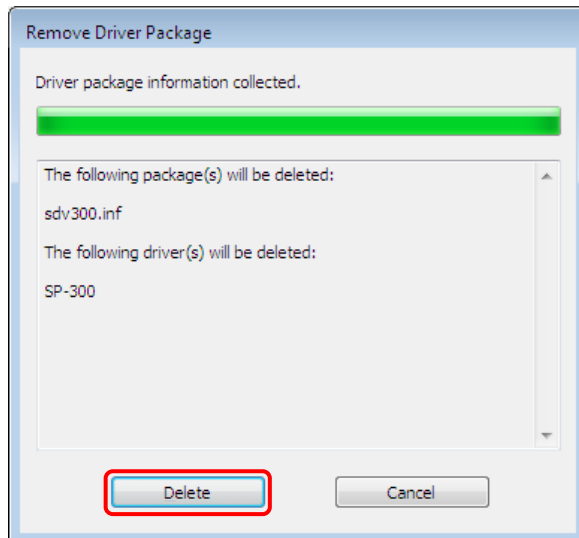
7. Select the "Drivers" tab, select "SP-300", and then click "Remove..."



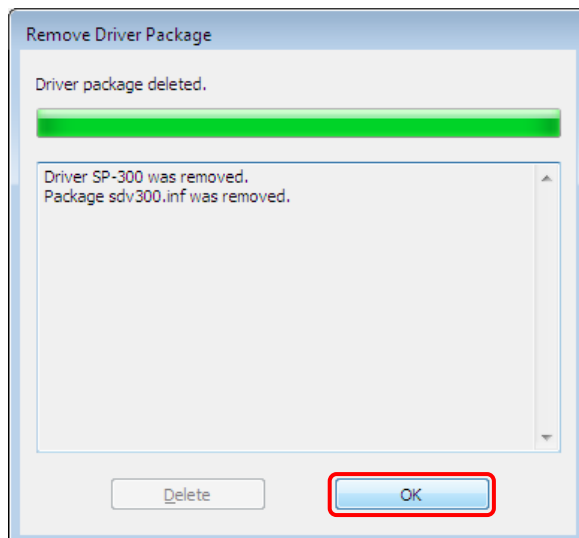
8. Select "Remove driver and driver package.", and then click "OK".



9. Click "Yes".



10. Click "Delete".



11. Click "OK".

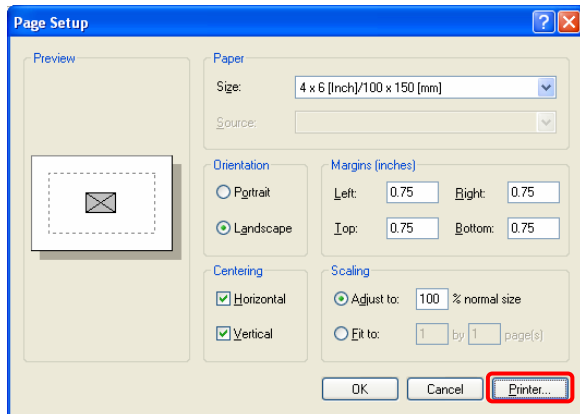
Printing from application software

You can use the "Print" command of application software to print an image from your computer with Digital Photo Printer SP-300 series.

NOTES

- **Before printing, make sure that the printer is properly connected to your computer with a proper USB cable.**
- This section describes setting up the driver and printing from "Paint" program as a typical application software.
- The explanation in this section are based on Windows XP.
- Suitable image size is 1816 x 1240 (dots) for the 4 x 6 inch size or 1544 x 1108 (dots) for the 3.5 x 5 inch size. Also make the resolution 300 dpi in the application software you are using.
- Even with those adjustments, an image may be cut off. If it occurs, reduce the image to fit in the page.

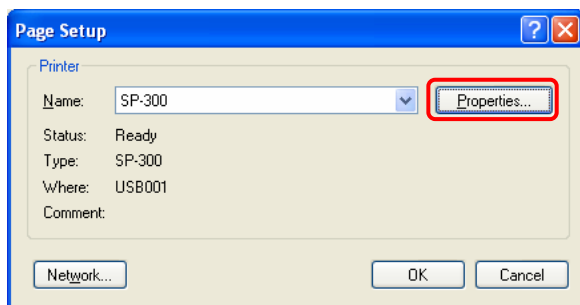
1. Start the application software, and open the image to be print.
2. Click "Page Setup" from the "File" menu of the application.
The "Page Setup" dialog window appears.



3. Page Setup.

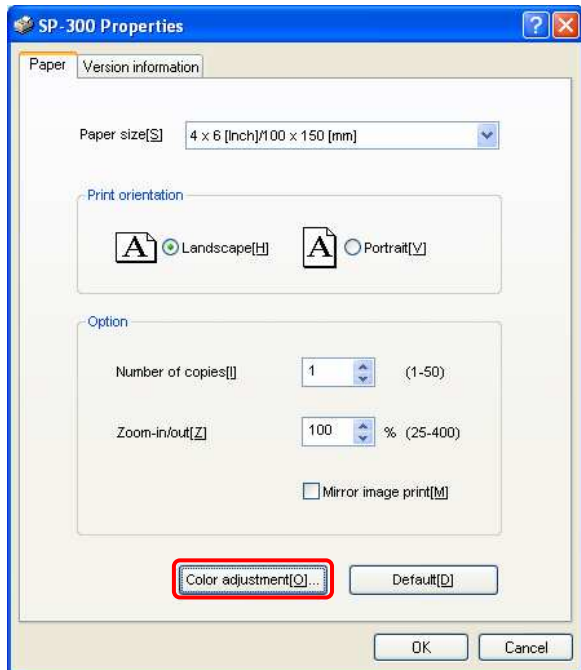
Your application software may show a different appearance.

- 3-1. Click "Printer" to show the "Page Setup" dialog window.



- 3-2. Select "SP-300".

- 3-3. Click "Properties..."
The SP-300 Printing Preferences window is displayed.



3-4. In the “Paper” tab window, check the Print orientation of an image either from “Portrait” or “Landscape”.

3-5. Number of Copies

Set the number of copies.

Effective Range: 1 ~ 50 (Default: 1).

3-6. Zoom in / Out

Set percentage at "Zoom in / out".

The origin for image scaling is on the center.

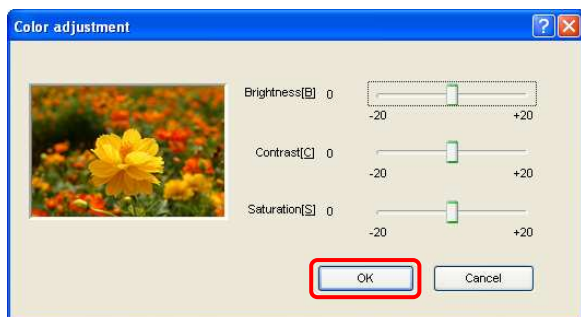
Effective Range: 25 ~ 400 (Default: 100)

3-7. Mirror image print

Check this option to print a mirror reversed image.

3-8. Color adjustment

Clicking this button shows the “Color adjustment” window.



3-9. Brightness

You can adjust Brightness.

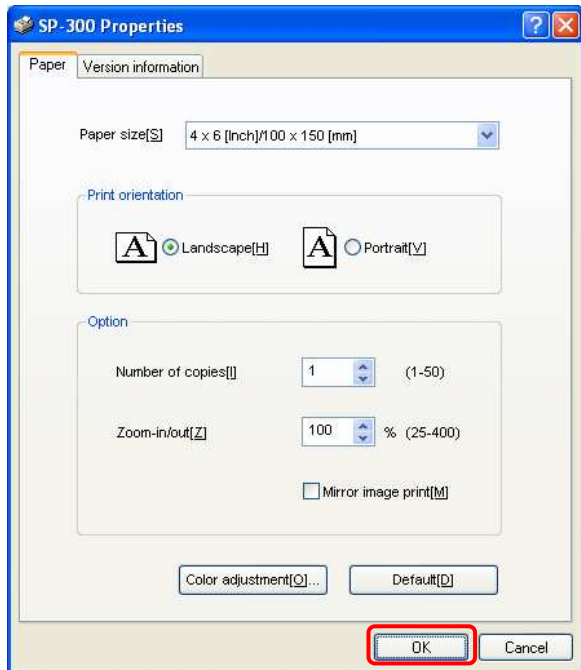
3-10. Contrast

You can adjust Contrast.

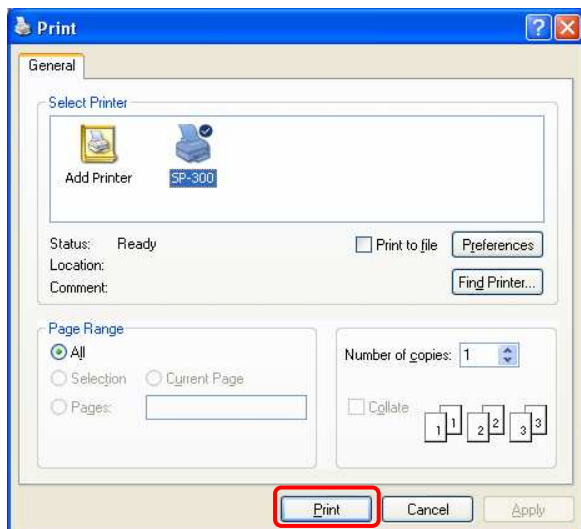
3-11. Saturation

You can adjust Saturation.

3-12. Click "OK".



3-12. Click "OK" to close the "Page Setup" dialog window.



4. Click "Print" from the "file" menu of the application software.
The "Print" dialog window appears.
5. Click "Print".
The printer starts printing.

To cancel printing

- When the application software shows its printing dialog window, click "Stop" or "Cancel".

The print job is canceled and the dialog window is closed.

- When the print job has already entered into the printer queue,
 1. Click the "Printers" (Windows 2000 Professional/ Windows Vista) or "Printers and Faxes" (Windows XP) on the Control Panel window.
 2. Double-click the "SP-300" icon.
The "SP-300" window is displayed. The documents in the print queue are listed on the window.
 3. Click the document you want to cancel.
 4. Click "Pause" or "Cancel" from the "Document" menu.
The document is removed from the list and the print job is canceled.
For the details, refer to the Windows documentation.

NOTES

If printing has already started and the print paper has already been loaded, do not cancel printing.

Please wait until the printing is completed.