

Digital Photo Printer CHC-S6145 Printer Driver Ver.1 Instruction Manual

Contents

Using your printer with Windows computers-----	1
System requirements -----	1
Notes-----	2
Installing the printer driver (ex. for Windows 7) -----	3
Uninstalling the printer driver (ex. for Windows 7)-----	9
Printing from application software -----	11
To cancel printing -----	17
Color adjustment-----	18
Split Print-----	22
4x6 Combo Print with 6x8 ribbon -----	23
Troubleshooting -----	24

SINFONIA TECHNOLOGY CO., LTD. SOFTWARE LICENSE AGREEMENT

IMPORTANT

READ THIS AGREEMENT CAREFULLY BEFORE USING THE SOFTWARE ON THE CD-ROM SUPPLIED WITH THE PRINTER OR OUR WEBSITE SUPPLIED.

BY USING THIS SOFTWARE, YOU AGREE TO BE BOUND BY THE TERMS OF THIS AGREEMENT.

IF YOU DO NOT AGREE TO THE TERMS AND CONDITIONS OF THIS AGREEMENT, DO NOT USE THE SOFTWARE INCLUDING THE DOCUMENTS ON THE CD-ROM PROVIDED, AND PROMPTLY RETURN THE WHOLE PRODUCT TO YOUR DEALER.

1. LICENSE

SINFONIA TECHNOLOGY CO., LTD. ("SINFONIA") grants you the non-exclusive right to use one copy of the SOFTWARE under the terms and conditions of this Agreement.

2. RESTRICTIONS ON USE

You may use the SOFTWARE on a single computer. You may not modify, reverse engineer, decompile, or disassemble the SOFTWARE.

3. DISCLAIMER OF WARRANTY

This SOFTWARE is provided to you "AS IS" and without any warranty and liability of any kind.

SINFONIA, its licensors or suppliers do not warrant that the functions contained in the SOFTWARE will meet your requirements or that the operation of the SOFTWARE will be uninterrupted or error free.

4. LIMITATION OF LIABILITY

In no event will SINFONIA, its licensors or suppliers be liable to you for any consequential, indirect, incidental, punitive or special damages, including any lost profits or lost savings, or other damages arising from the use or inability to use the SOFTWARE even if advised of the possibility of such damages.

Some States or jurisdictions do not allow the exclusion or limitation of incidental or consequential damages, so the above limitations may not apply to you.

5. TERM; TERMINATION

This license is effective until terminated. You may terminate this license at any time by destroying the SOFTWARE and all copies in any form. This license will terminate without notice to you if you fail to comply with any term or condition of this license. Upon termination you must destroy the SOFTWARE and all copies in any form.

6. EXPORT RESTRICTIONS

You agree to comply fully with all international and national laws and regulations that apply to the SOFTWARE, and your use thereof, including, but not limited to, end-user, end-use and destination restrictions issued by Japanese and other governments. Without limiting the generality of the foregoing, you agree not to export, directly or indirectly, re-export, divert, or transfer the SOFTWARE or any direct product thereof to any destination, company or person restricted or prohibited by national and international laws or regulations or laws or regulations of any other applicable jurisdiction.

Using your printer with Windows computers

The supplied CHC-S6145 printer driver enables you to print an image stored on your computer with the CHC-S6145 digital photo printer. To print an image from the computer, you need appropriate application software that can open the image and print with the printer.

Microsoft and Windows are either registered trademarks or trademarks of Microsoft Corporation. In this instruction manual, Microsoft(R) Windows(R) operating systems are written as follows:

Abbreviated name	Registered trademarks of Microsoft Corporation
Windows 7	Microsoft(R) Windows(R) 7
Windows 8	Microsoft(R) Windows(R) 8
Windows 8.1	Microsoft(R) Windows(R) 8.1
Windows 10	Microsoft(R) Windows(R) 10

System requirements

To use the supplied printer driver, you need a computer that meets the following system requirements:

OS: Windows 7 (32bit / 64bit) / Windows 8/8.1/10 (32bit / 64bit)

CPU: x86 processor 1 GHz or better (Windows 7 / Windows 8/8.1 / Windows 10)

x64 processor 1 GHz or better (Windows 7 64bit / Windows 8/8.1 64bit / Windows 10 64bit)

RAM: 1 GB or more (Windows 7 / Windows 8/8.1/ Windows 10 32bit)

2 GB or more (Windows 10 64bit)

Disk free space: 16 GB or more (Windows 7 / Windows 8/8.1 / Windows 10)

Port: A built-in USB port on the personal computer.

CD-ROM drive: For software installation.

Notes

- (1) Be sure to connect the printer directly to your computer. Connecting it via a USB hub may cause the printer to not operate properly.
- (2) Do not use the printer together with other USB devices except a USB keyboard or mouse.
- (3) Do not connect two or more CHC-S6145 digital photo printers at the same time.
- (4) Do not unplug the USB cable during data transferring or printing. To do so may cause the printer to not operate properly.
- (5) The printer driver cannot be used for network printer.
- (6) Due to over print spool size restriction for Windows (example, Windows Vista: 4 GB), printing will be stopped. Please delete the print jobs, and re-print after divide the print jobs into several groups.
- (7) Microsoft and Windows are either registered trademarks or trademarks of Microsoft Corporation.
- (8) Other names and products not mentioned above may be registered trademarks or trademarks of their respective companies.
- (9) If you have any questions or problems please contact chc-master@tokyo.shinko-elec.co.jp

Installing the printer driver (ex. for Windows 7)

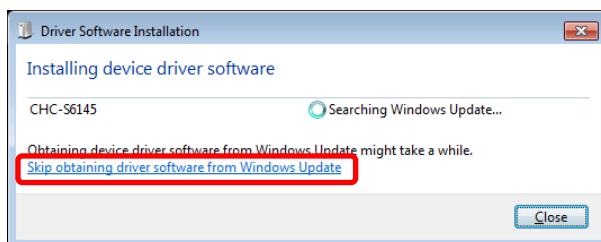
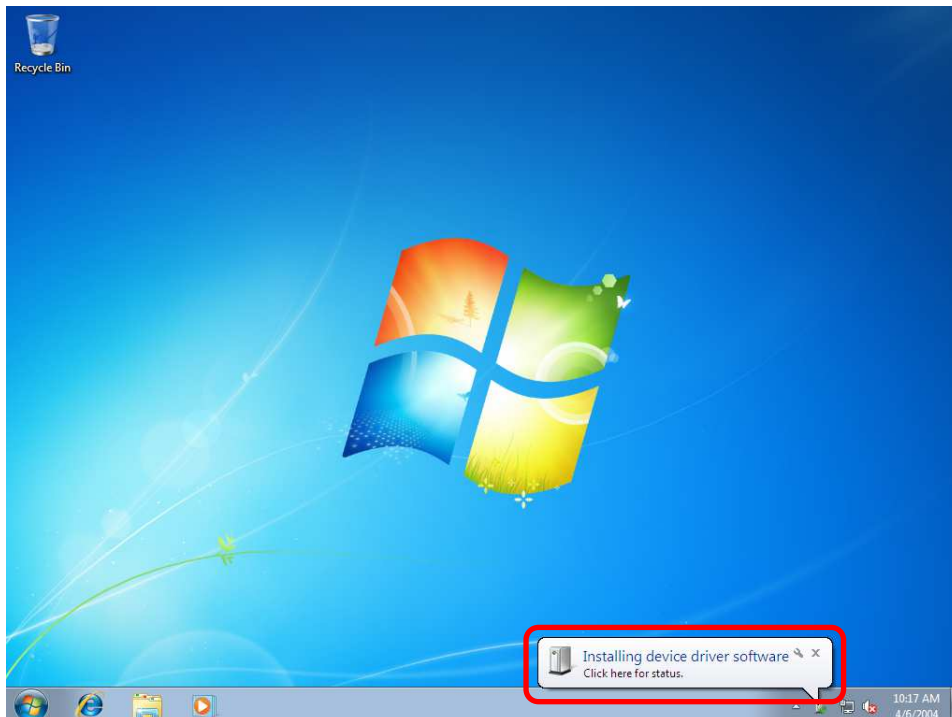
NOTES

- (1) The explanations in this section are based on Windows 7 Home Premium. On another edition of Windows, the actual screen contents and procedures may vary from those shown.
- (2) You need to uninstall before installing the latest printer driver, if a previous version printer driver is installed on your system.

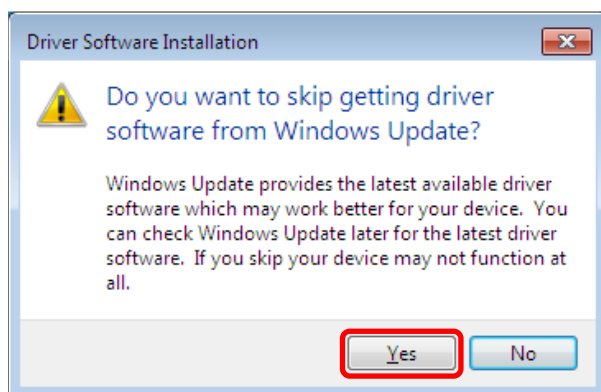
(Common operation procedure of each OS)

1. Make sure that the printer is turned off and not connected to the computer.
2. Turn on your computer to start the Windows.
 - Be sure to log on Windows as “Administrator”
 - Be sure to turn off any virus protection programs and to close other running programs before installing the driver.
3. Turn the printer on.
4. Connect the printer to your computer, using the USB cable.

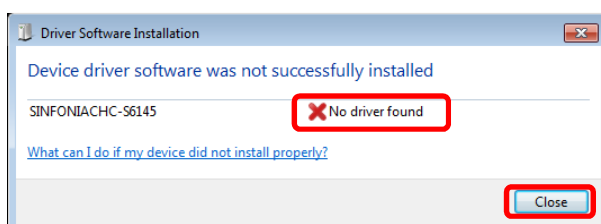
(Windows 7) When connection is established, the following balloon tip appears automatically on the taskbar. Click the balloon tip.



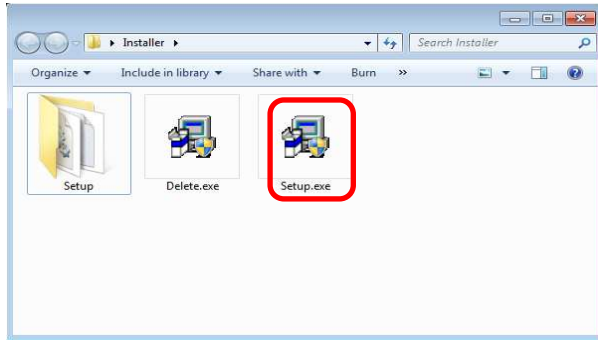
5. Click "Skip obtaining driver software from Windows Update".



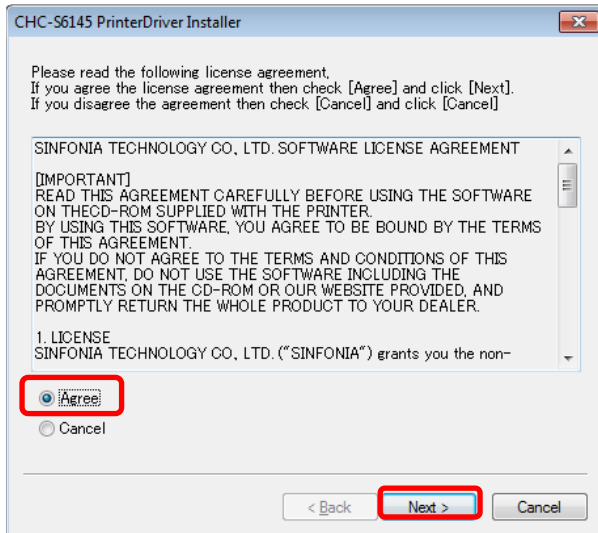
6. Click "Yes".



7. Wait until the "No driver found" appears on the right of "SINFONIACHC-S6145", and then click "Close".



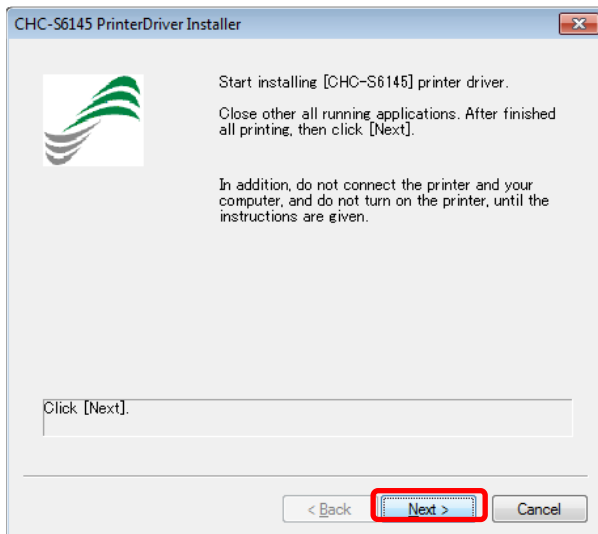
8. Open "Installer" folder, and then double-click "Setup.exe" icon.



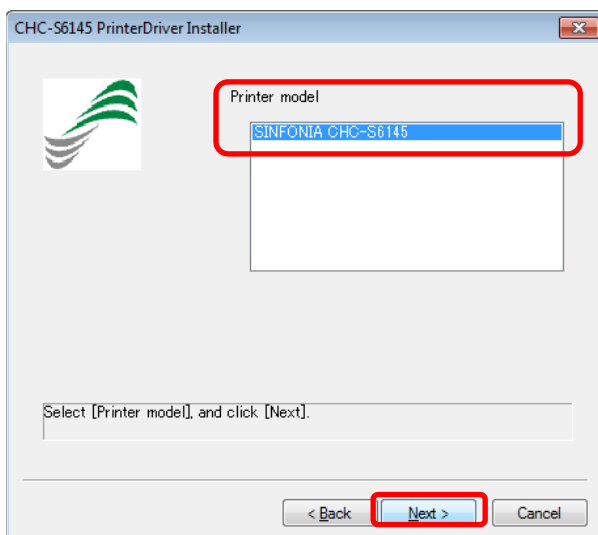
9. Please read the license agreement.

If you agree the license agreement then check "Agree" and click "Next".

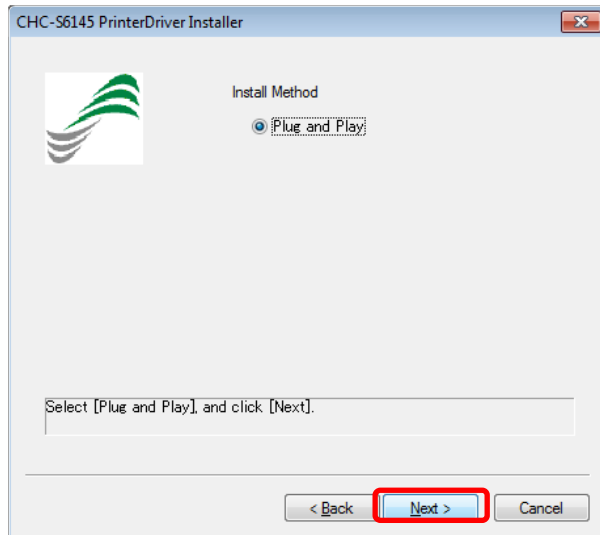
If you disagree the agreement then check "Cancel" and click "Cancel".



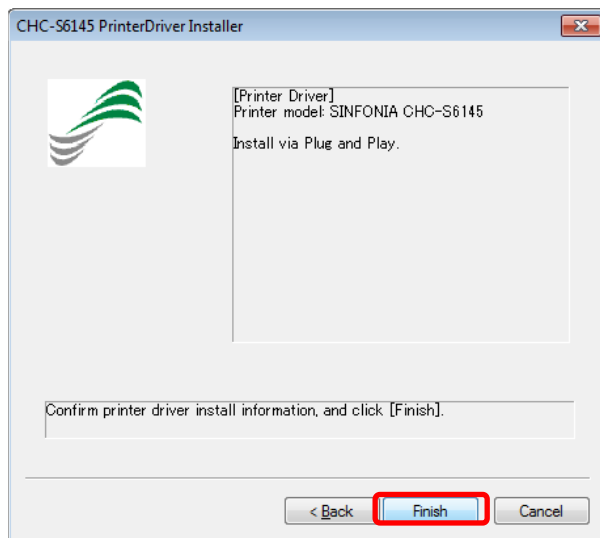
10. Close other all running applications. After finished all printing, then click "Next".



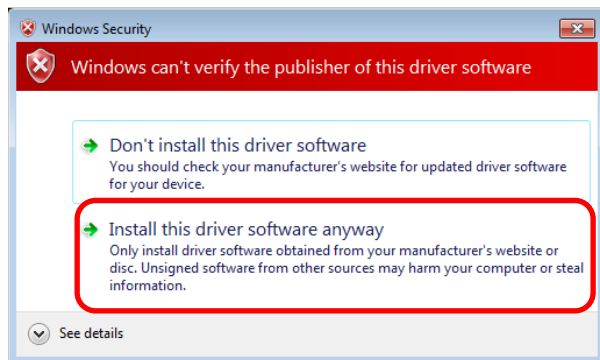
11. Select printer model, and click "Next".



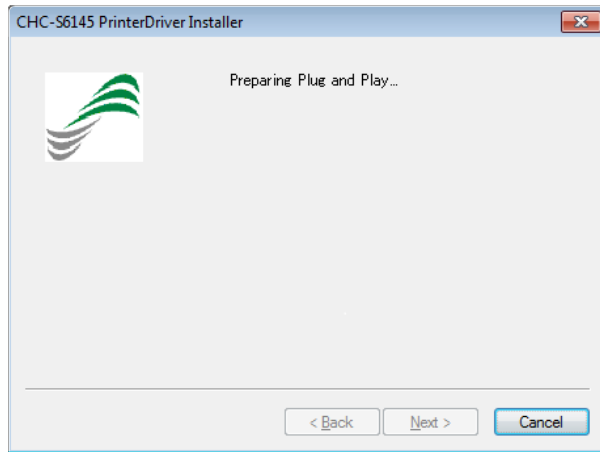
12. Select “Plug and Play”, and click “Next”.



13. Click “Finish”.

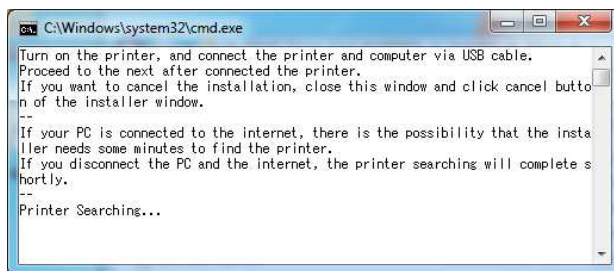


14. Click “Install this driver software anyway”.

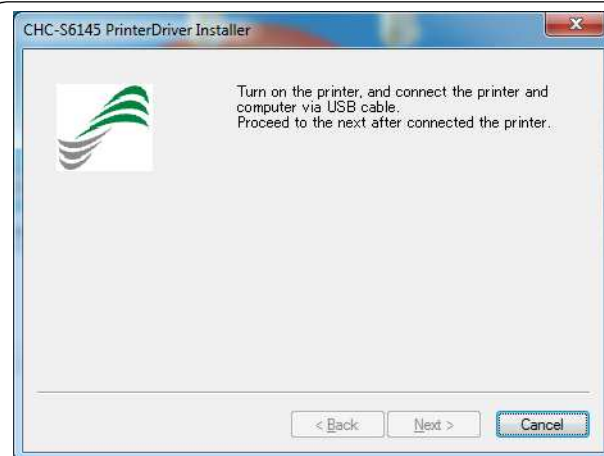


15. Installing the driver. Please wait a minute.

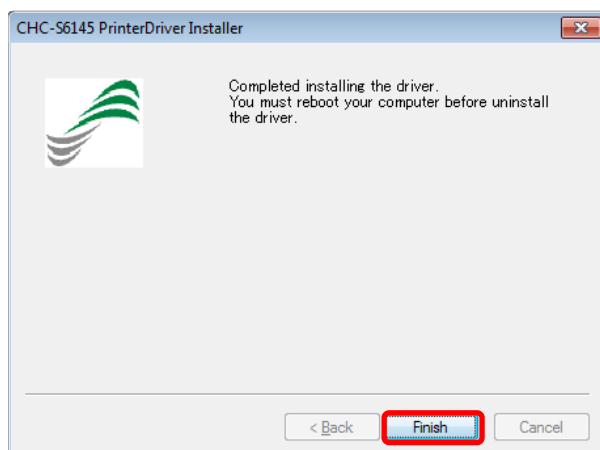
(Automatically switching Plug and Play mode to your printer as needed)



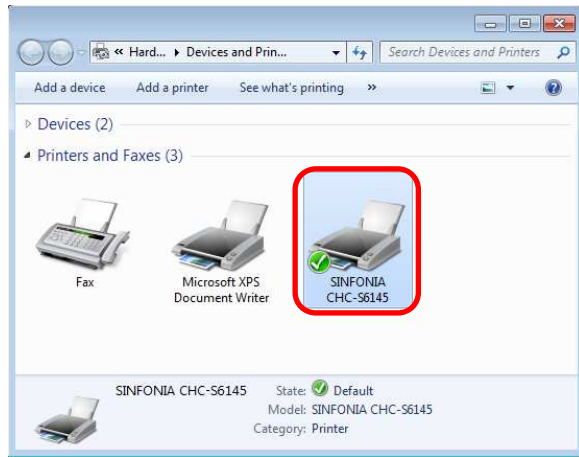
15-1. waiting.....



15-2. waiting.....



16. Click "Finish".

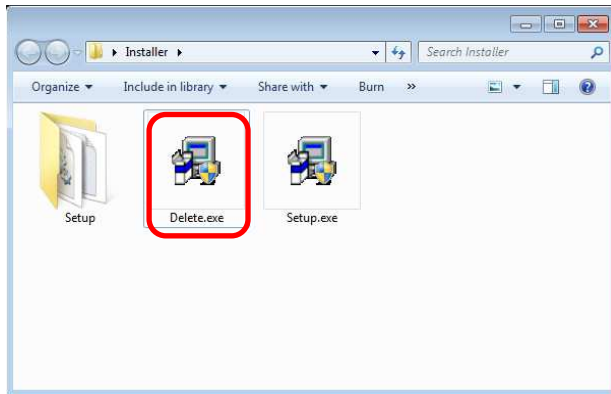


17. The "SINFONIA CHC-S6145" printer icon appears in the "Devices and Printers" window.

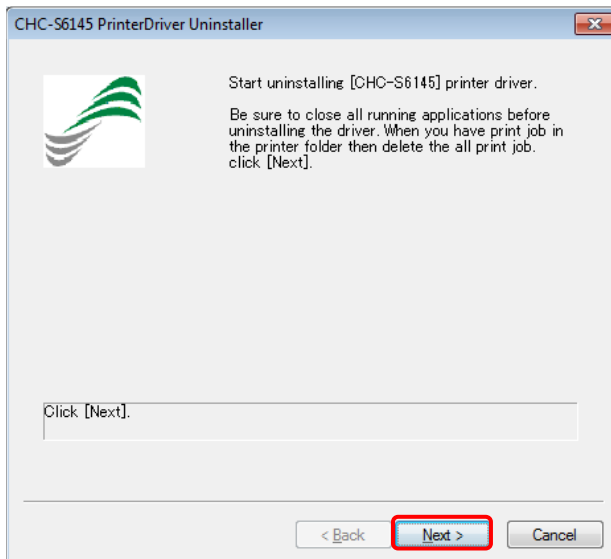
Uninstalling the printer driver (ex. for Windows 7)

To uninstall the printer driver, follow the procedures below.

1. Unplug the USB cable from your computer.



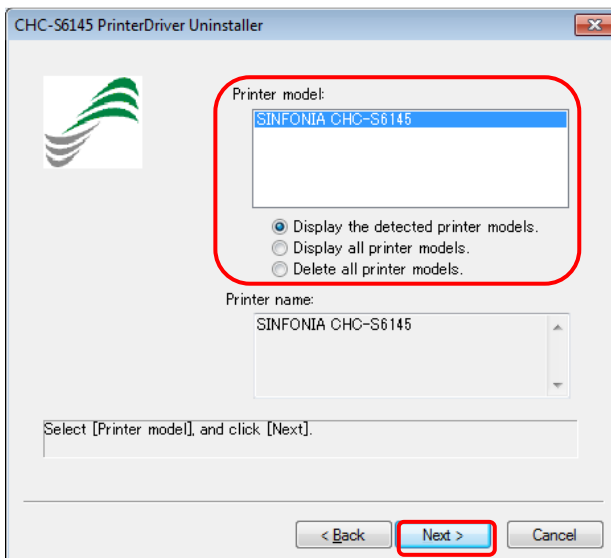
1. Open "Installer" folder, and then double-click "Delete.exe" icon.



2. Close all running applications.

When you have print job in the printer folder then delete the all print job.

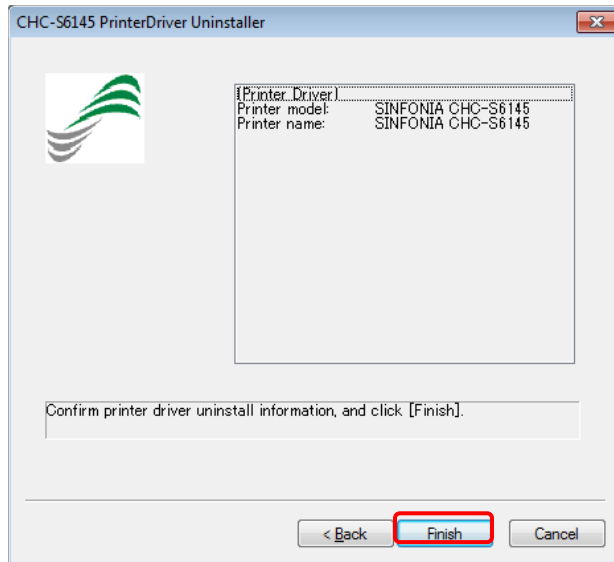
Click "Next."



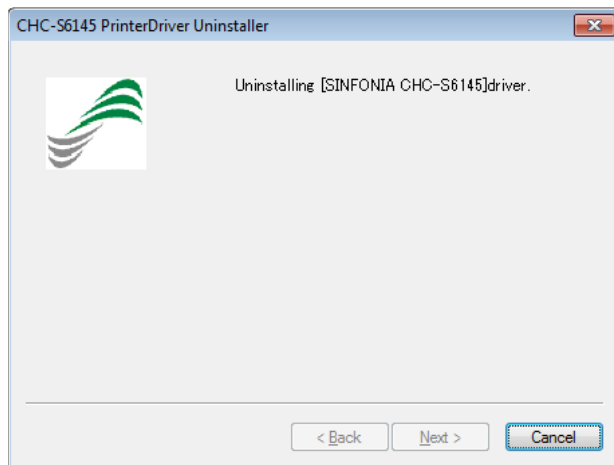
3. Select "Display the detected printer models" radio button, and select Printer model, and click "Next."

NOTES

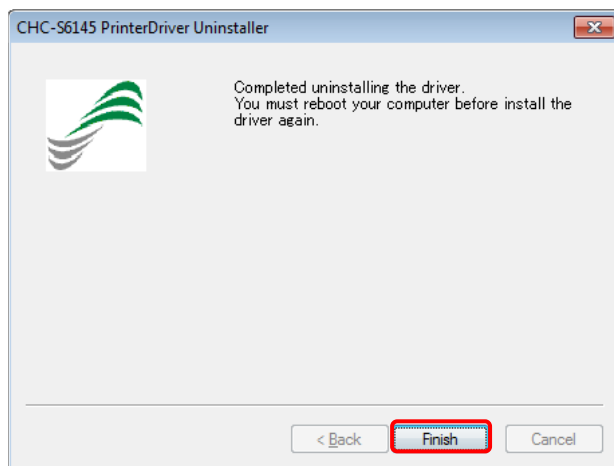
- "Display the detected printer models"
Display the installed printer driver in Windows.
- "Display all printer models"
Display the all printer models in the installer.
- "Delete all printer models"
Delete the all printer models in the installer.



4. Click "Finish."



5. Uninstalling the driver. Please wait a minute.



6. Click "Finish."

7. Reboot your computer.

Printing from application software

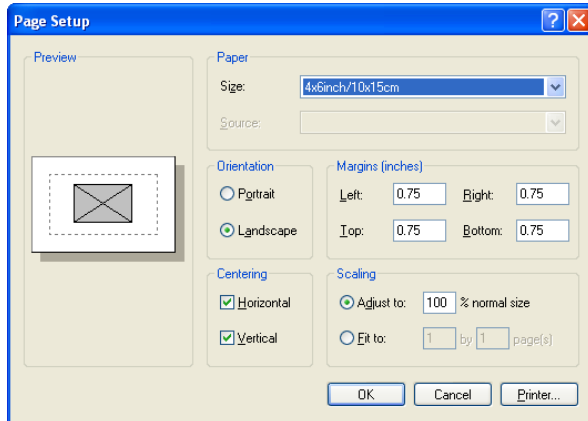
You can use the "Print" command of application software to print an image from your computer with CHC-S6145 digital photo printer.

NOTES

- (1) Before printing, make sure that the printer is properly connected to your computer with a proper USB cable.
- (2) This section describes setting up the driver and printing from the Windows "Paint" program as typical application software.
- (3) The explanation in this section is based on Windows 7.
- (4) The maximum image size for each paper size is as follow.

Paper size selected	Maximum image size in pixel units	Applicable Printer Model
4x6inch/10x15cm	1,240 x 1,844	CHC-S6145-5
2x6inch/5x15cm	634 x 1844	CHC-S6145-5
5x7inch/13x18cm	1,548 x 2,140	CHC-S6145-5
6x8inch/15x20cm	1,844 x 2,434	CHC-S6145-5
6x8inch/15x20cm(Split-2UP)	1,844 x 2,492	CHC-S6145-5
6x9inch/15x23cm	1,844 x 2,740	CHC-S6145-5
4x6inch/No trimming(for ID photo)	1,210 x 1,844	CHC-S6145-5
CardSize/89x60mm	1,100 x 744	CHC-S6145-5A
CardSize/89x59mm	1,100 x 732	CHC-S6145-5A
CardSize/89x58mm	1,100 x 720	CHC-S6145-5A
CardSize/89x57mm	1,100 x 708	CHC-S6145-5A
CardSize/89x56mm	1,100 x 696	CHC-S6145-5A
CardSize/89x55mm	1,100 x 684	CHC-S6145-5A

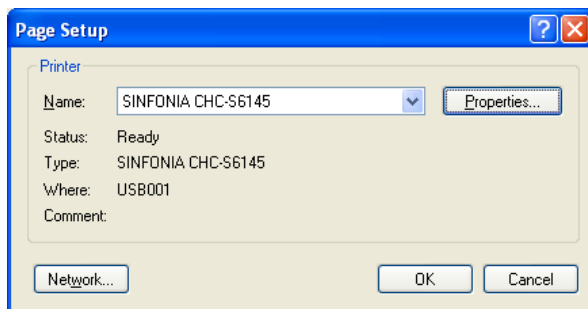
1. Start the application software, and open the image to print.
2. Click "Print..." from the "Print" menu of the application.
The "Print" dialog box appears.



3. Page Setup.

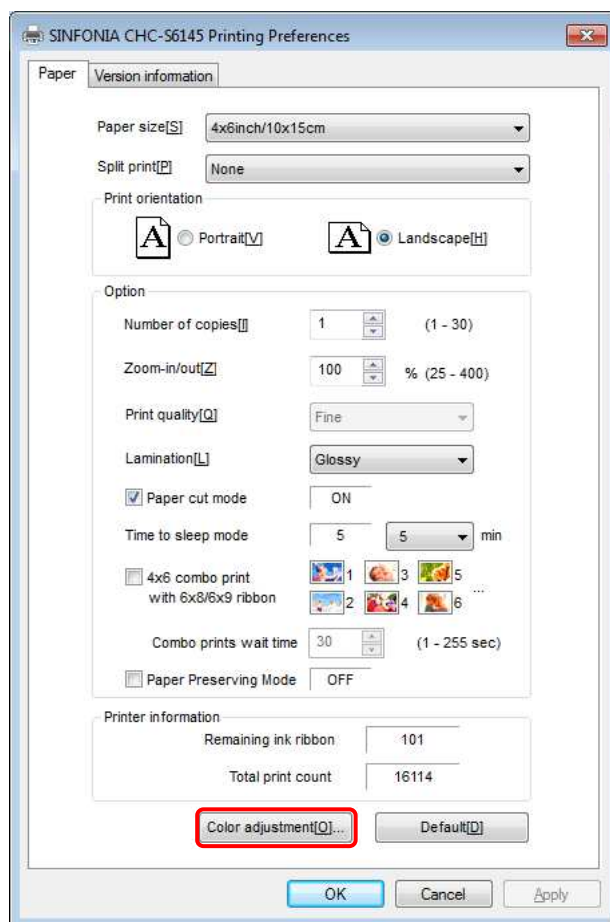
Your application software may show a different appearance.

- 3-1. Click "Printer..." to show the "Page Setup" dialog box.



- 3-2. Select "SINFONIA CHC-S6145"

- 3-3. Click "Properties..." to show the "SINFONIA CHC-S6145 Properties" dialog box.



3-4. Paper size

Choose a paper size you want to print.

3-5. Split print

When you use the "Split Print" function, select a combination of finished print size.

Currently one combination of two 4 x 6 inch prints is available.

3-6. Print orientation

Select the Print orientation of an image either from "Portrait" or "Landscape".

3-7. Number of copies

Set the number of copies.

Effective Range: 1 ~ 30 (Default: 1)

3-8. Zoom-in / out

Set percentage at "Zoom-in / out". The origin for image scaling is on the center.

Effective Range: 25 ~ 400 (Default: 100)

3-9. Print quality

You can use this function when you choose Paper size for CHC-S6145-5A (CardSize).

3-10. Lamination

Choose a lamination of prints from "Glossy" of "Matte" or "OP Skip."

3-11. Paper cut mode

Set the "Paper cut mode" function to your CHC-S6145 printer.

Check on: "Paper cut mode: on".

Check off: "Paper cut mode: off".

3-12. Time to sleep mode

Set the "Time to sleep mode" function to your CHC-S6145 printer.

Possible setting values are as follows. 5, 15, 30, 60, 120, 240 min

if the printer is not supported the "Time to sleep mode", "Time to sleep mode" will be grayed out.

3-13. 4x6 combo print with 6x8/6x9 ribbon

When you check this box and send a 4x6 image, the printer will wait for a next 4x6 image (wait time is specified by "Combo prints wait time").

If you send a next 4x6 image within the wait time you specified, the printer starts combo printing.

If you don't send a next 4x6 image, the printer will start printing only the first 4x6 image.

3-14. Combo prints wait time

This item shows the wait time of 3-13.

3-15. Paper Preserving Mode

Set the "Paper Preserving Mode" function to your CHC-S6145

Check on: "Paper Preserving Mode: on".

Check off: "Paper Preserving Mode: off".

3-16. Remaining ink ribbon

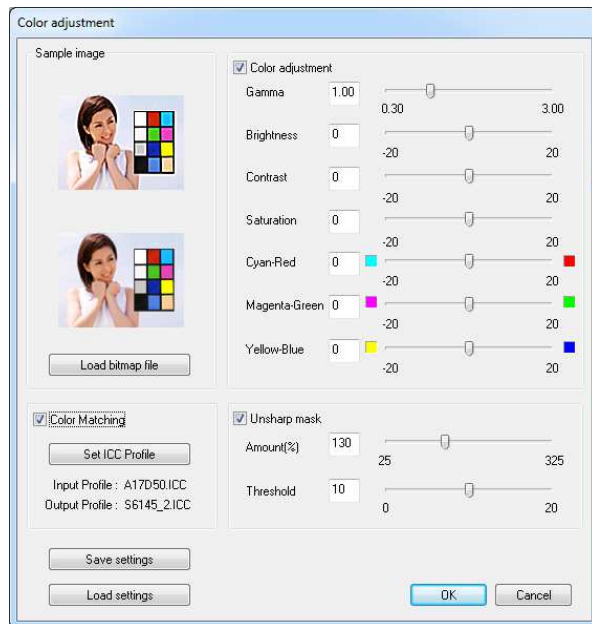
This item shows approximate number of available prints with the loaded ink ribbon.

3-17. Total print count

This item shows total print counts stored in the internal memory of the printer.

NOTES

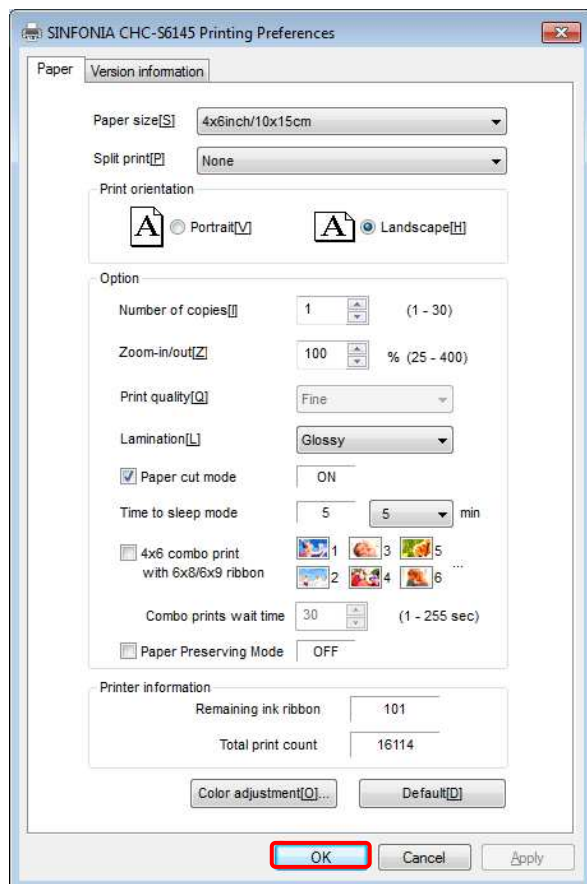
The actual number of prints may vary from the figure displayed depending on how the successive printing is performed.



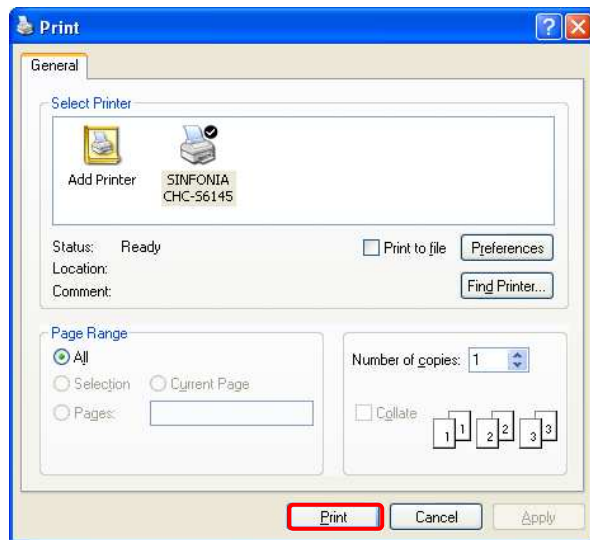
3-18. Color adjustment

Clicking this button shows the "Color adjustment" window to adjust the prints.

See the section of "Color adjustment" in this document.



3-19. Click "OK" to return to the "Print" dialog box.



4. Click "Print" from the "file" menu of the application software.

The "Print" dialog box appears.

5. Click "Print" to start printing.

Click "Cancel" to cancel.

To cancel printing

- When the application software shows the Print dialog box, click "Cancel".
The print job will be canceled and the dialog box will be closed.
- When the print job has already entered into the print queue,
 1. Select "Settings" from the Windows Start menu, and then click "Printers and Faxes".
 2. Double-click on the "SINFONIA CHC-S6145" icon.
The "SINFONIA CHC-S6145" window is displayed. The documents in the print queue are listed in the window.
 3. Click the document you want to cancel.
 4. Click "Cancel" in the "Document" menu.
The document is removed from the list and the print job is canceled.
For the details, refer to the Windows documentation.

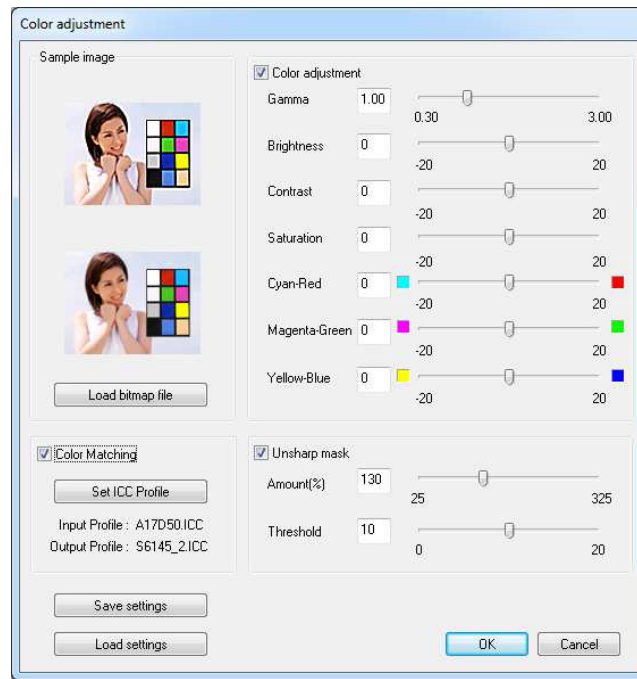
NOTES

If printing has already started, do not cancel printing.
Please wait until the printing is completed.

Color adjustment

Color adjustment window

You can select various kinds of printing options for color adjustment in the "Color adjustment" window.



Sample image

The upper image will preview the effects of color adjustments.
The lower image represents the original sample image.

NOTES

The preview image shows the approximate effects of color adjustment and may not represent the actual printing result.

Load bitmap file button

Clicking this button displays open dialog window to load a bitmap file to replace the default sample image.

Acceptable bitmap file: 24-bit full color, 480(H) x 680(W) pixels or less.

Color Matching checkbox

Checking this checkbox enables the color matching process for input images.

Set ICC Profile button

Clicking this button displays the "Color Matching" window to allow you to define how the color matching applies to an input image.

Input ICC Profile:

The input ICC profile name is displayed to be used for the color matching process.

Output ICC Profile:

The output ICC profile name is displayed to be used for the color matching process.

Save settings button

Clicking this button displays the open dialog window to save the settings of color adjustment to an external file.

Load settings button

Clicking this button displays the open dialog window to load the settings of color adjustment from an external file.

Color adjustment checkbox

Checking this checkbox enables every settings of "Color adjustment" option.

Gamma editbox / slider bar

This option adjusts the midtone of the print image. Drag the slider bar to the right to decrease the lightness of the midtone or to the left to increase it. You can also enter a value directly in the editbox.

Adjustable range: 0.30 ~ 3.00 (Default: 1.00)

Brightness editbox / slider bar

This option adjusts the brightness of the print image. Drag the slider bar to the right to increase the brightness or to the left to decrease it. You can also enter a value directly in the editbox.

Adjustable range: -20 ~ 20 (Default: 0)

Contrast editbox / slider bar

This option adjusts the contrast of the print image. Drag the slider bar to the right to increase the contrast or to the left to decrease it. You can also enter a value directly in the editbox.

Adjustable range: -20 ~ 20 (Default: 0)

Saturation editbox / slider bar

This option adjusts the saturation of the print image. Drag the slider bar to the right to increase the saturation or to the left to decrease it. You can also enter a value directly in the editbox.

Adjustable range: -20 ~ 20 (Default: 0)

Cyan – Red editbox / slider bar

This option adjusts the color balance between Cyan and Red elements. The higher you set the value, the more the Red element increase while the Cyan element decrease – and vice versa.

Adjustable range: -20 ~ 20 (Default: 0)

Magenta – Green editbox / slider bar

This option adjusts the color balance between Magenta and Green elements. The higher you set the value, the more the Green element increase while the Magenta element decrease – and vice versa.

Adjustable range: -20 ~ 20 (Default: 0)

Yellow – Blue editbox / slider bar

This option adjusts the color balance between Yellow and Blue elements. The higher you set the value, the more the Blue element increase while the Yellow element decrease – and vice versa.

Adjustable range: -20 ~ 20 (Default: 0)

Unsharp mask checkbox

Checking this checkbox enables every settings of "Unsharp mask" option.

Amount [%] editbox / slider bar

This option adjusts the magnitude of contrast at the edges of the print image. The higher you set the value, the sharper the print image becomes.

Adjustable range: 25 ~ 325 (Default: 130)

Threshold editbox / slider bar

This option sets threshold against the brightness change among the pixels contained in the image to determine if the unsharp mask is applied. The lower you set the value, the sharper the print image becomes.

Adjustable range: 0 ~ 20 (Default: 10)

OK button

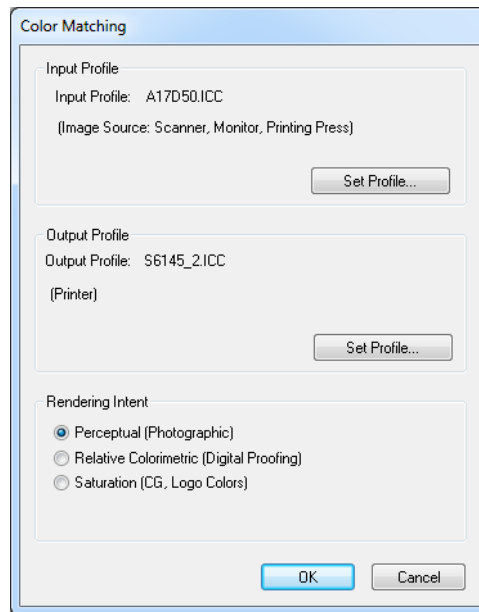
Clicking this button fixes the settings in the "Color adjustment" window, and then close the window.

Cancel button

Clicking this button discards the settings in the "Color adjustment" window, and then close the window.

Color Matching window

You can choose ICC profiles and a Rendering Intent.



Input Profile:

Current input ICC profile name in use is displayed.

Output Profile:

Current output ICC profile name in use is displayed.

Set Profile... button

Clicking this button allows you to load an input ICC profile or an output ICC profile respectively.

At the "Input Profile", load an ICC profile for the input device by which the current image was created.

At the "Output Profile", load an ICC profile (S6145_2.ICC) for the printer.

Rendering Intent

You can choose Rendering Intent from the three options as shown in the table below.

Rendering Intent	Features
Perceptual (Photographic)	Maps color smoothly, preserving relationships between similar colors, and generally provides the best reproduction of photographs.
Relative Colorimetric (Digital Proofing)	Represents any remaining out of gamut colors by the closest match and is generally a good choice for proof print.
Saturation (CG, Logo Colors)	Prints punchy business charts and graphs, preserving the saturation or brightness of colors.

OK button

Clicking this button fixes the settings in the "Color Matching" window, and then close the window.

Cancel button

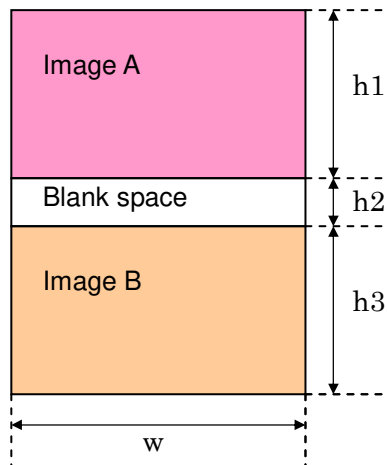
Clicking this button discards the settings in the "Color Matching" window, and then close the window.

Split Print

CHC-S6145 Printer Driver can perform Split Print in combination with 2 images, which are combined by certain application software. This method saves print job time, and ink ribbon.

1.Combine 2 images with blank space by your application software.

The dimensions of whole and each image and blank space are shown in the table below.



Combination of image	Image A h1 x w [Pixel]	Blank space h2 x w [Pixel]	Image B h3 x w [Pixel]
4x6 inch & 4x6 inch	1240 x 1844	12 x 1844	1240 x 1844
2x6 inch & 2x6 inch	634 X1844	0x0	634 x 1844

2. The proper settings in the "SINFONIA CHC-S6145 Properties" dialog box are as follows.

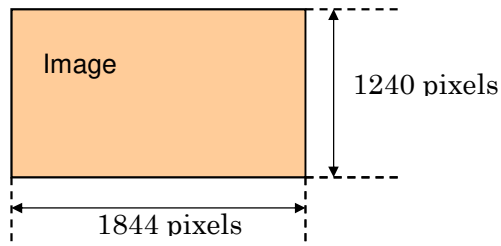
Print size: 6x8inch/15x20cm(Split-2UP)
Split print: 4 x 6 & 4 x 6 [inch]
Print orientation: Portrait
Zoom-in/out: 100 %

3. The image B and A will be printed, cut and come out from the printer in this order.

4x6 Combo Print with 6x8 ribbon

CHC-S6145 Printer Driver (ver.1.4 or later) can perform Combo Print with 2 images, which are combined by Printer (Main App firmware ver.07.23 or later). This method saves print job time, and ink ribbon.

The dimension of image to prepare is shown in the figure below.




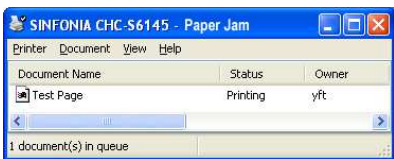


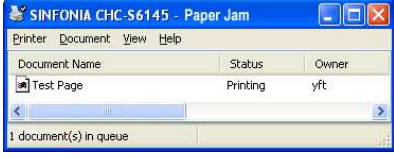
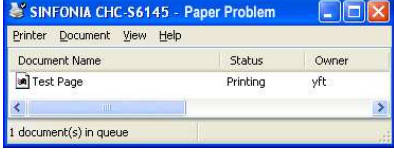
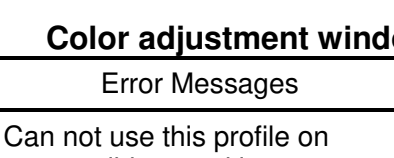
The procedures of combo print are as follows:

Combo print by same image	Combo print by different images																												
<ol style="list-style-type: none"> 1. Prepare an image (image A) by your application software. 2. The proper settings in the dialog box are as follows. <table> <tr> <td>Print size:</td><td>4x6inch/10x15cm</td></tr> <tr> <td>Split print:</td><td>None</td></tr> <tr> <td>Print orientation:</td><td>Portrait</td></tr> <tr> <td>Number of copies:</td><td>2</td></tr> <tr> <td>Zoom-in/out:</td><td>100 %</td></tr> <tr> <td>4x6 combo print:</td><td>Checked</td></tr> <tr> <td>Combo print wait time:</td><td>30 seconds is recommended</td></tr> </table> 3. Send image A with the above settings. 4. Same 2 images will be printed, cut and come out from the printer. 	Print size:	4x6inch/10x15cm	Split print:	None	Print orientation:	Portrait	Number of copies:	2	Zoom-in/out:	100 %	4x6 combo print:	Checked	Combo print wait time:	30 seconds is recommended	<ol style="list-style-type: none"> 1. Prepare 2 images (image A, image B) by your application software. 2. The proper settings in the dialog box are as follows. <table> <tr> <td>Print size:</td><td>4x6inch/10x15cm</td></tr> <tr> <td>Split print:</td><td>None</td></tr> <tr> <td>Print orientation:</td><td>Portrait</td></tr> <tr> <td>Number of copies:</td><td>2</td></tr> <tr> <td>Zoom-in/out:</td><td>100 %</td></tr> <tr> <td>4x6 combo print:</td><td>Checked</td></tr> <tr> <td>Combo print wait time:</td><td>30 seconds is recommended *</td></tr> </table> 3. First send image A, next send image B with the above settings. * <u>Send image B within the combo print wait time you specified after image A is sent. Otherwise the printer starts printing only image A.</u> 4. Image A and B will be printed, cut and come out from the printer in this order. 	Print size:	4x6inch/10x15cm	Split print:	None	Print orientation:	Portrait	Number of copies:	2	Zoom-in/out:	100 %	4x6 combo print:	Checked	Combo print wait time:	30 seconds is recommended *
Print size:	4x6inch/10x15cm																												
Split print:	None																												
Print orientation:	Portrait																												
Number of copies:	2																												
Zoom-in/out:	100 %																												
4x6 combo print:	Checked																												
Combo print wait time:	30 seconds is recommended																												
Print size:	4x6inch/10x15cm																												
Split print:	None																												
Print orientation:	Portrait																												
Number of copies:	2																												
Zoom-in/out:	100 %																												
4x6 combo print:	Checked																												
Combo print wait time:	30 seconds is recommended *																												

Troubleshooting

When the printer driver displays a Printer Status on the Printer Folder, refer to the following table below for its cause and correction.

Printer Folder

Printer Folder	Possible Causes	Possible Solutions
	A hardware malfunction may have occurred in the printer.	Consult the distributor of the printer or our support center.
	The operation panel is in use.	Exit from the "Test Print Mode" of the printer.
	A paper jam has occurred.	Remove the jammed paper in accordance with the user manual of the printer.
	The printer cover is open.	Close the printer cover.
	The ink ribbon has run out or is not loaded.	Remove the used ink ribbon and load a new one.
	The paper roll has run out or is not loaded.	Load a new one.
	The size of paper loaded in the printer does not match the size specified in the current print job.	Load the correct size of paper to the printer or cancel the print job and print again with the correct paper size.

Color adjustment window

Error Messages	Possible Causes	Possible Solutions
Can not use this profile on current ribbon and image mode.	Incorrect ICC profile(s) are specified for the current settings.	Check if the ICC profile(s) are compatible with the current settings.
Can not find right ICC Profile.	The selected ICC profile is not found; or the ICC Profile has collapsed.	Check if the ICC Profile exists and is not broken.
Can not load bitmap file.	The selected bitmap file is not supported.	Load an acceptable bitmap file that is in 24-bit full color and up to 480 pixels in height and 680 pixels in width.