

Digital Control Revolutionizes Parts Delivery

A revolutionary digital controller series for use with regular parts feeders for conveyance of parts of all sizes. Auto-tuning function eliminates need for frequency adjustment, and convenient digital settings and displays, etc. allow parts feeders to operate to their full potential.



Features

•Auto-tuning function eliminates need for frequency adjustment

This digital system has an advanced frequency auto-tuning function. It automatically tracks resonance point changes resulting from mechanical changes over time, regardless of changes to the volume of workpieces, to deliver optimal vibration at all times. There is no need for leaf-spring adjustments, and even frequency adjustment is unnecessary. This keeps the equipment activated much more of the time and saves energy.

•Digital setting/display makes settings easy to manage

Amplitude, drive frequency, output voltage notches are all set and displayed digitally, making them easy to manage.

•Constant amplitude control matched to workpieces

With digital setting of amplitude, an amplitude detection sensor allows drive at a constant amplitude suited to the workpieces under conveyance.

•Complete control possible with a single controller

Control of both a parts feeder and linear feeder is possible with a single controller.

•Soft start settings can be adjusted up to 4 seconds

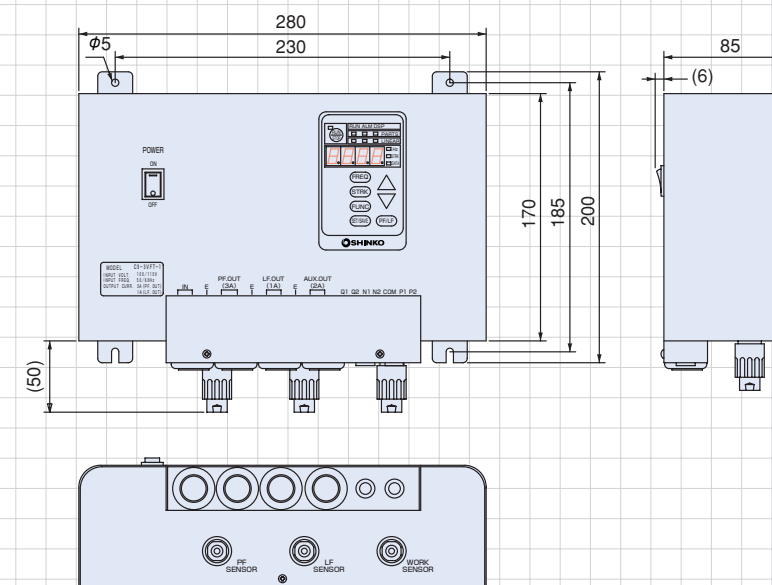
•On-off delay time can be adjusted up to 60 seconds

•Changes to button labels

•Changes to function displays

•Case color changed to that of C10 series

C9-3VFT-2C/C9-3VFT-1C Dimensions



Specifications

Model	C9-3VFT-2C	C9-3VFT-1C
Input Power source	AC200/220V ±10%, 50/60Hz	AC100/110V ±10%, 50/60Hz
Control system	PWM system	
Output	Voltage	0~190V
	Vibration frequency	Parts feeder: 49~90Hz, 65~120Hz, 90~180Hz, 180~360Hz Linear feeder: 49~90Hz, 65~120Hz, 90~180Hz, 180~360Hz
	Maximum current	3A
		1A
Operating modes	Auto-tuning mode	Resonant frequency auto-tuning allows constant amplitude control with no need for frequency setting
	Constant amplitude mode	Constant amplitude control at set frequency
	Constant voltage mode	Frequency, output voltage set manually
	Quick removal function	Temporary increase in PF amplitude to clear leftover workpieces, etc.
Additional features	Speed selector	Selection of amplitude settings (up to 4) by means of external signal
	Start/Stop control	Start/stop control by external signal
	Output signal	Outputs signal tuned to parts feeder operation
	Soft start	Start-up time 0.2~4.0 seconds
	On/Off delay timer	Delay time 0.2~60.0 seconds
	Sensor power source	3P power plug gives DC12V, max. 80A
Tuned power source output	Function	Power source output tuned to parts feeder operation (RUN)
	Control system	ON/OFF control by Triac
	Output voltage	As power source input to controller
	Maximum current	2A
Conditions for use	Noise tolerant voltage	Above 1000V
	Ambient temperature	0~40°C
	Ambient humidity	10~90% (no condensation)
	Case color	Japan Paint Industry Association U75-70D
	Weight	2.3 kg
Our compatible Parts feeders	EA-15/20/25/30/38/45, ER-25B/30B/38B/45B	
Our compatible Linear feeders	LFB-350/450/600, LFB-300/400/550, LFG-400/550/700	